

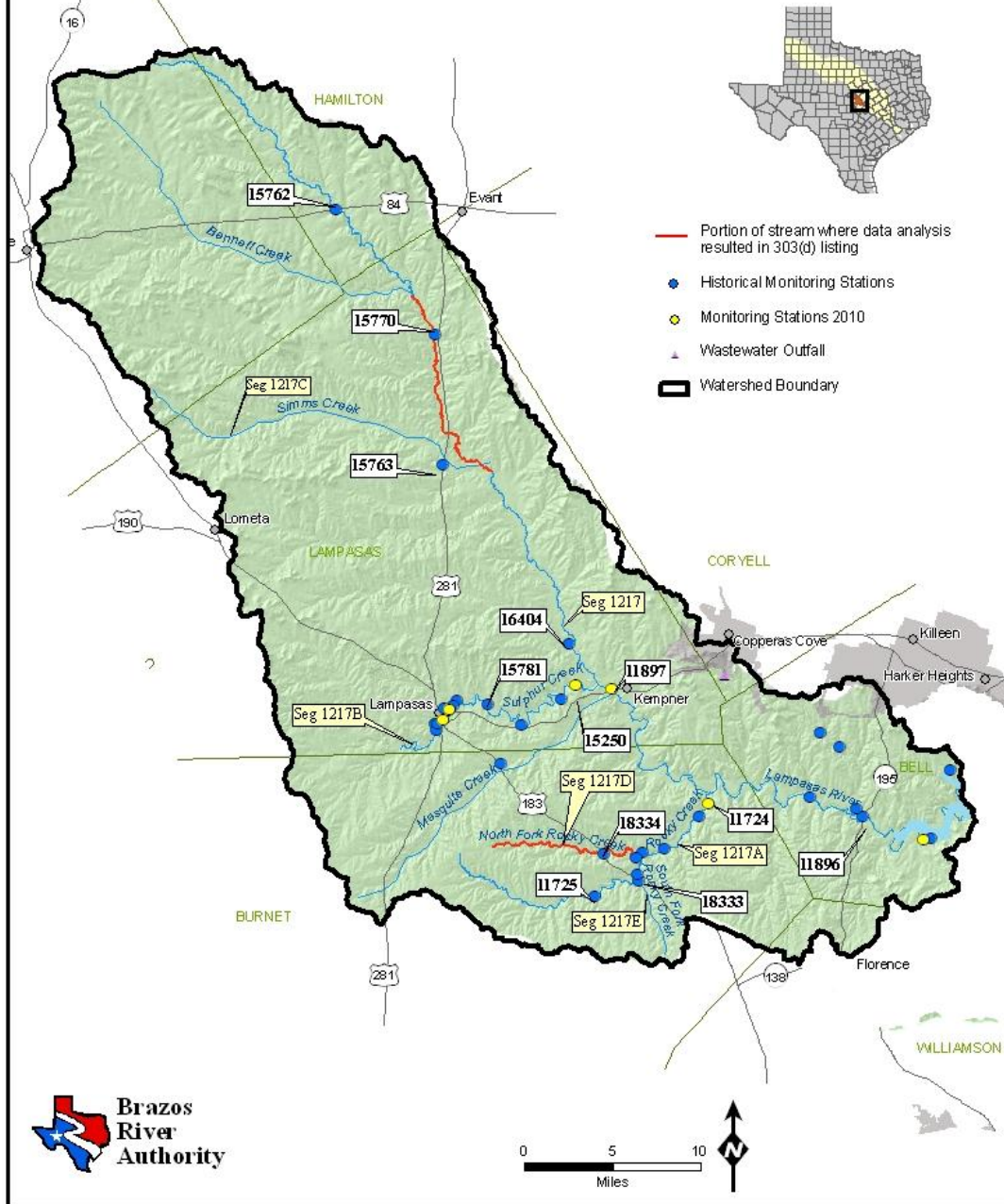


Lampasas River Watershed

Clean Rivers Program Water Quality Monitoring



Lampiras River Watershed Water Quality Monitoring





FY2010 Monitoring

- **One station on the mainstem of the Lampasas River is monitored quarterly**
 - **Station 11897 – LAMPASAS RIVER AT US 190 is monitored quarterly**
 - **Two Biological Assessments in 2010**

- **Four stations on tributaries to the Lampasas River are monitored quarterly**
 - **Station 18783 – SULPHUR CREEK AT US 281**
 - **Station 18760 – SULPHUR CREEK UPSTREAM OF LAMPASAS WWTP**
 - **Station 15250 – SULPHUR CREEK AT CR 3050 (Hallmark Crossing)**
 - **Station 11724 – ROCKY CREEK at FM 963**



303(d) Listings

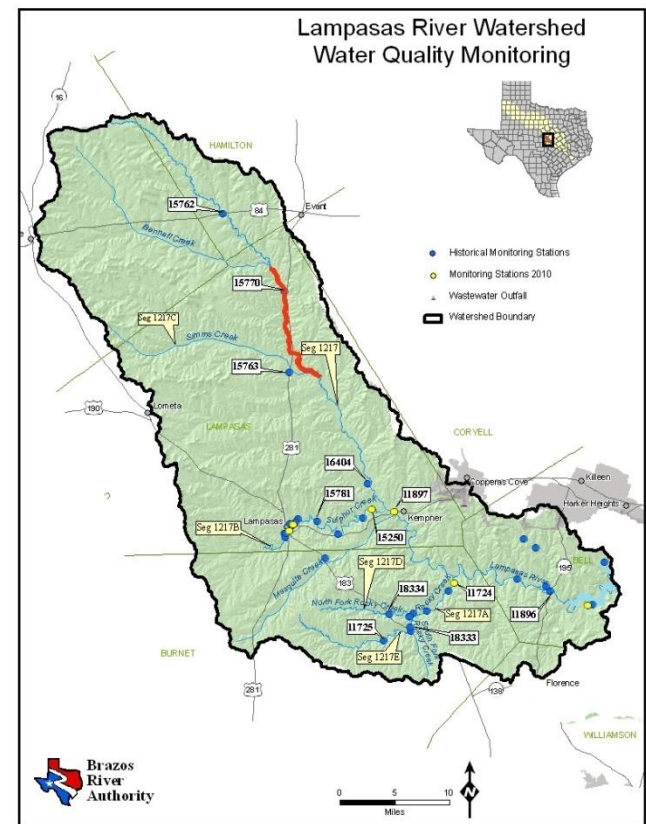
- **Segment 1217 – Lampasas River Above Stillhouse Hollow Lake**
 - **First Listed in 2002 for not supporting Contact Recreation due to elevated bacteria**
 - **1217_04 - *From the FM 1690 crossing to the CR 117 crossing, (Station 15770) is the portion of the stream that resulted the listing***
 - **1217_05 - *From CR 117 crossing to the upper end of the segment, (Station 15762) was listed as having a concern for Contact Recreation due to elevated bacteria***
 - **In 2008, both 1217_04 and 1217_05 were included on the 2008 303(d) list. The 1217_05 site was listed in error and will be corrected in the 2010 303(d) list.**



303(d) Listings

■ 1217_04 – Station 15770 - LAMPASAS RIVER AT CR 105

- Fecal coliform data was collected from 4/98 through 7/99
- There were 12 samples collected
 - Of these 12, there were 6 samples that contained **>400 CFU**
 - The geometric mean was **235 CFU** (>200 CFU is non-supporting)





303(d) Listings

■ Unclassified Segment 1217D – Station 18334 – NORTH FORK ROCKY CREEK SOUTHERN FM 963 CROSSING

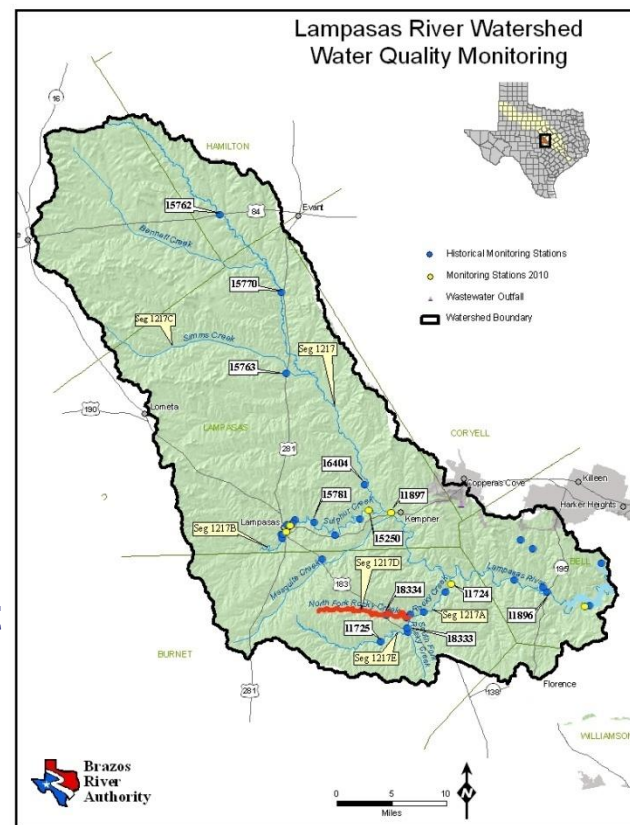
■ Data from Station 18334

■ First Listed in 2006 for not supporting designated Aquatic Life Use due to low 24-hr average Dissolved Oxygen

■ 24-hr Dissolved Oxygen data was collected from 8/02 through 9/04.

■ There were 13 events

■ Of these 13, there were 5 events that produced samples that were **<3 mg/L**





Status of Other Stations in the Lampasas River Watershed that are Considered in Assessments

■ 1217_05

■ Station 15762 - LAMPASAS RIVER AT US 84

■ Monitored from 03/1998 – 07/1999

■ Bacteria Data – Fecal coliform

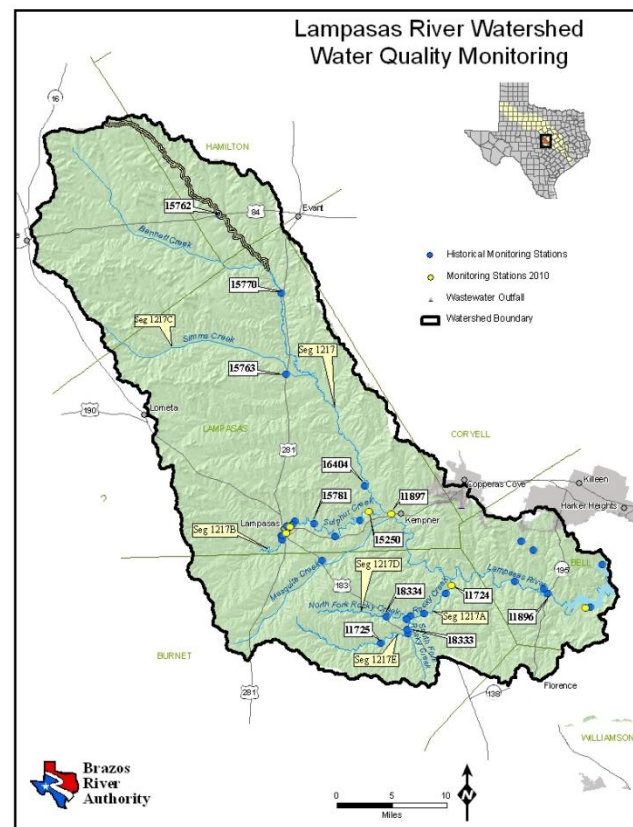
■ N = 14

■ Geomean = **172 CFU**

■ Dissolved Oxygen Grab Data

■ N = 15

■ Average **8.1 mg/l**





Status of Other Stations in the Lampasas River Watershed that are Considered in Assessments

■ 1217_04

■ Station 15770 - LAMPASAS RIVER AT CR 105

■ Monitored from 06/1998 – 07/1999

■ Bacteria Data – Fecal coliform

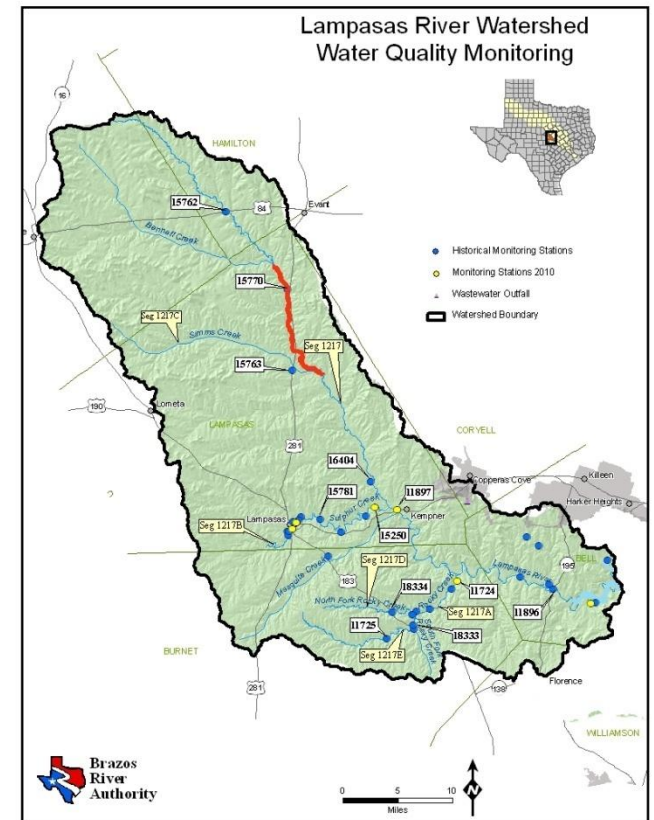
■ N = 12

■ Geomean = **235 CFU**

■ Dissolved Oxygen Grab Data

■ N = 13

■ Average = **8.1 mg/l**





Status of Other Stations in the Lampasas River Watershed that are Considered in Assessments

■ 1217C

■ Station 15763 - SIMMS CREEK AT US 281

■ Monitored from 03/1998 – 08/1999

■ Bacteria Data – Fecal coliform

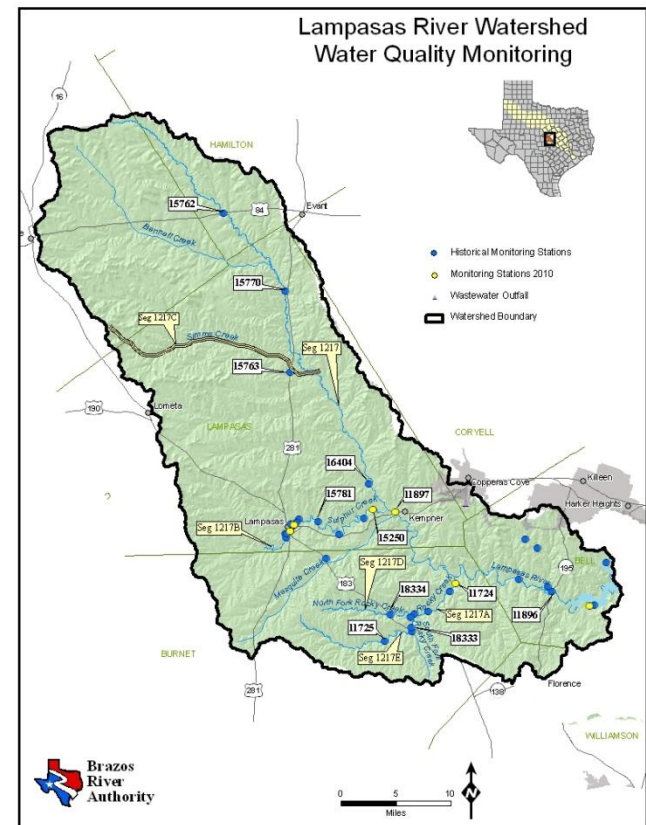
■ N = 13

■ Geomean = **120 CFU**

■ Dissolved Oxygen Grab Data

■ N = 14

■ Average = **8.7 mg/l**





Status of Other Stations in the Lampasas River Watershed that are Considered in Assessments

■ 1217_03

■ Station 16404 - LAMPASAS RIVER AT FM 2313

■ Monitored from 03/1998 – 08/1999

■ Bacteria Data – Fecal coliform

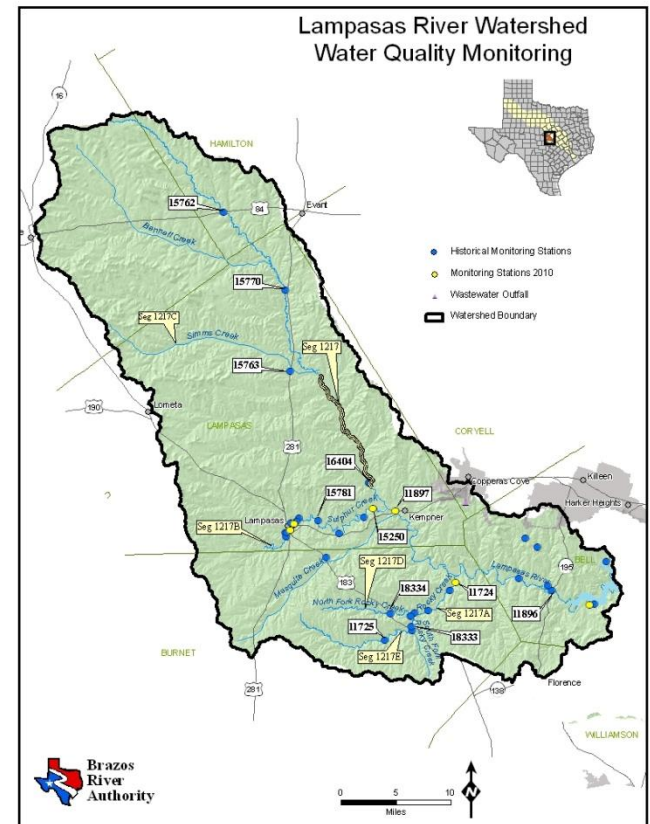
■ N = 15

■ Geomean = **138 CFU**

■ Dissolved Oxygen Grab Data

■ N = 16

■ Average = **9.1 mg/l**





Status of Other Stations in the Lampasas River Watershed that are Considered in Assessments

■ 1217_02

■ Station 11897 - LAMPASAS RIVER AT US 190

■ Monitored from 09/2001 – Present

■ Bacteria Data – *E. coli*

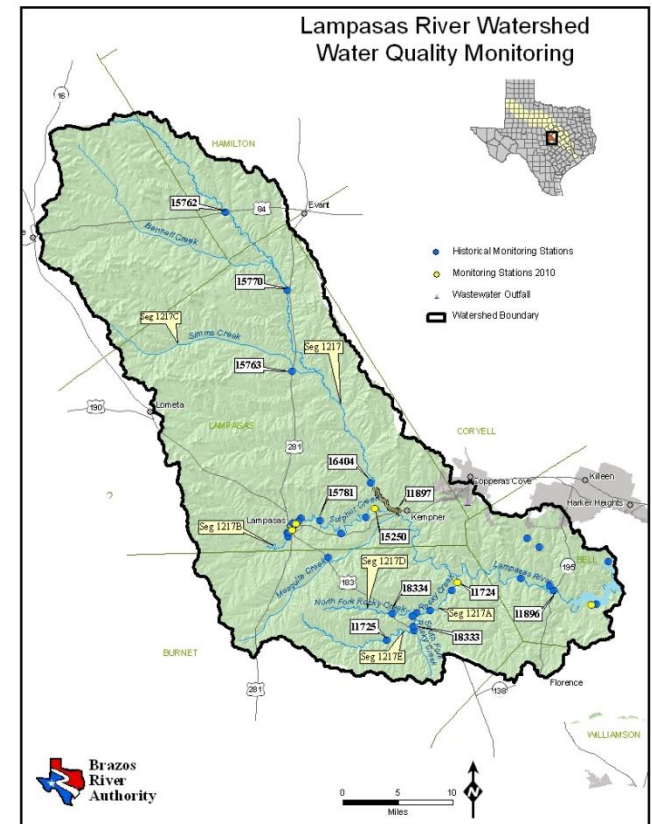
■ N = 36

■ Geomean = **65 MPN**

• Dissolved Oxygen Grab Data

■ N = 16

■ Average = **11.1 mg/l**





Status of Other Stations in the Lampasas River Watershed that are Considered in Assessments

■ 1217B

■ Station 15250 - SULPHUR CREEK AT LAMPASAS CR 8

■ Monitored from 09/2001 – Present

■ Bacteria Data – *E. coli*

■ N = 52

■ Geomean = **73 MPN**

■ Dissolved Oxygen Grab Data

■ N = 55

■ Average = **9.6 mg/l**

■ Station 15781 - SULPHUR CREEK AT LAMPASAS CR 7

■ Monitored from 01/1999 – 08/06

■ Bacteria Data – *E. coli*

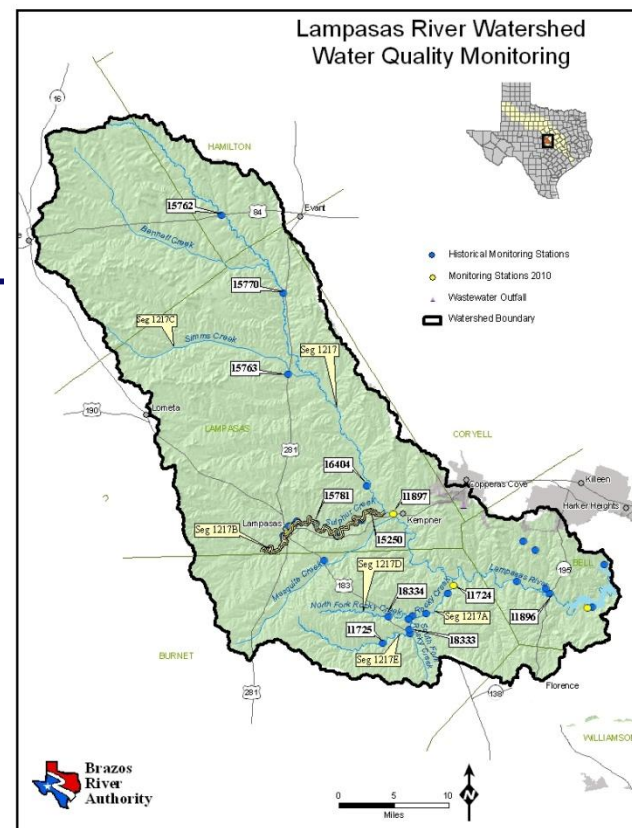
■ N = 15

■ Geomean = **90 MPN**

■ Dissolved Oxygen Grab Data

■ N = 55

■ Average = **9.6 mg/l**





Status of Other Stations in the Lampasas River Watershed that are Considered in Assessments

■ 1217D

■ Station 18334 - NORTH FORK ROCKY CREEK SOUTHERN FM 963 CROSSING

■ Monitored from 08/2002 – 09/04

■ 24-hr Dissolved Oxygen Data

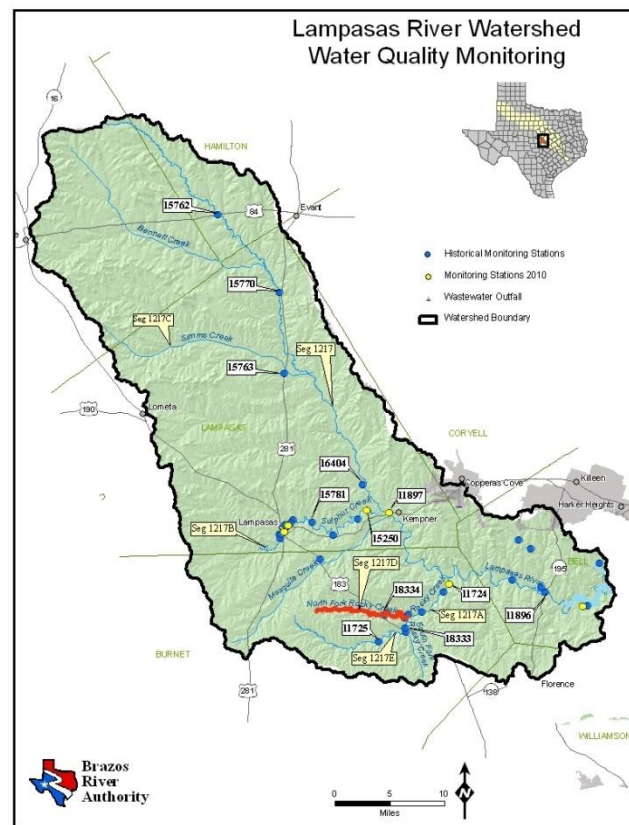
■ N = 13

■ Exceedances = 5 < 3.0 mg/l

■ Dissolved Oxygen Grab Data

■ N = 14

■ Average = 5.3 mg/l





Status of Other Stations in the Lampasas River Watershed that are Considered in Assessments

■ 1217E

■ Station 11725 - SOUTH FORK ROCKY CREEK AT FM 963

- Monitored from 11/1988 – 08/1997

- Bacteria Data – Fecal coliform

 - N = 13

 - Geomean = **57 CFU**

- Dissolved Oxygen Grab Data

 - N = 41

 - Average = **7.8 mg/l**

■ Station 18333 - SOUTH ROCKY CREEK AT US 183

- Monitored from 08/2002 – 09/2007

- Dissolved Oxygen Grab Data

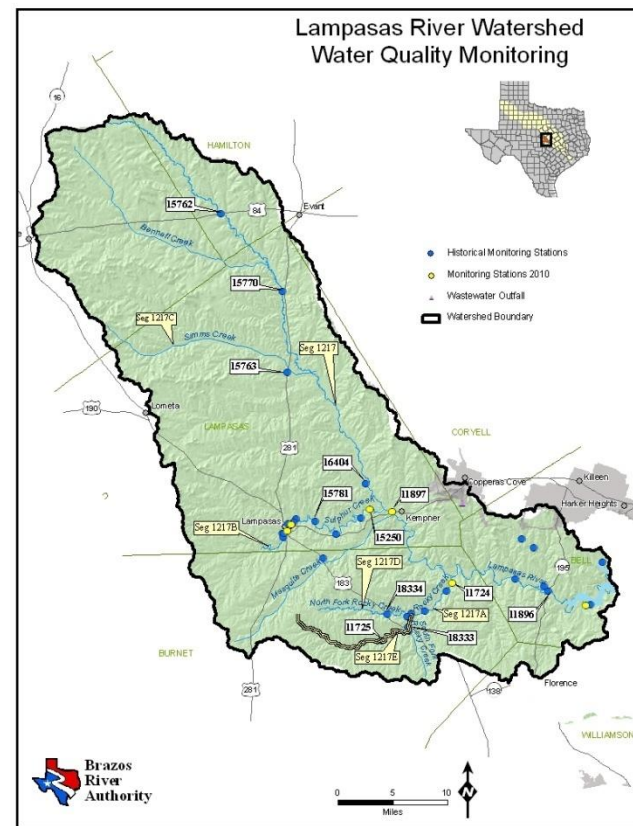
 - N = 14

 - Average = **8.9 mg/l**

- 24-hr Dissolved Oxygen Data

 - N = 13

 - 24-hr Average = **All samples > 5.5 mg/L**





Status of Other Stations in the Lampasas River Watershed that are Considered in Assessments

■ 1217A

■ Station 11724 - ROCKY CREEK AT FM 963

■ Monitored from 02/2006 – Present

■ Bacteria Data – *E. coli*

■ N = 16

■ Geomean = **80 MPN**

■ Dissolved Oxygen Grab Data

■ N = 18

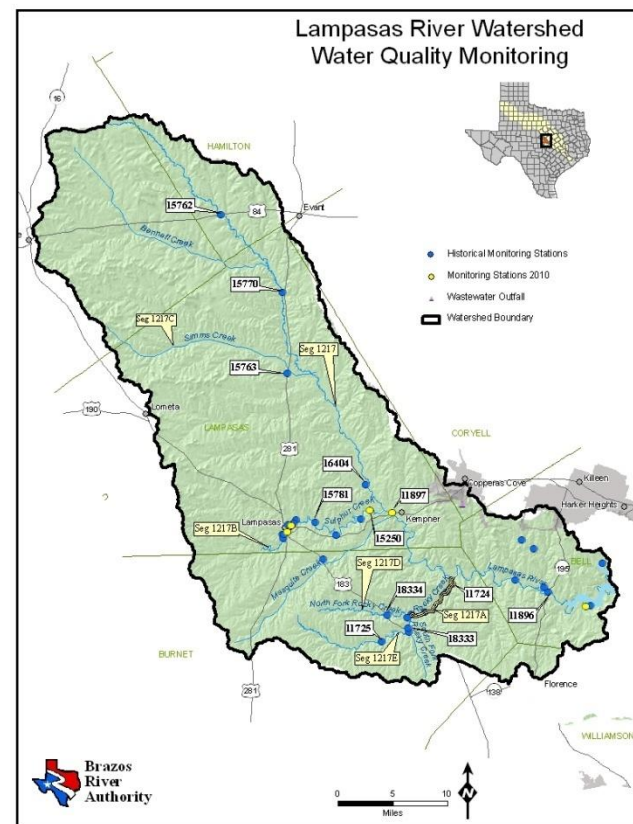
■ Average = **8.1 mg/l**

■ 24-hr Dissolved Oxygen Data

■ Collected from 08/2002 – 09/04

■ N = 12

■ 24-hr Average = **All samples >7.5 mg/l**





Status of Other Stations in the Lampasas River Watershed that are Considered in Assessments

■ 1217_01

■ Station 11896 - LAMPASAS RIVER AT SH 195

■ Monitored from 10/1973 – 05/2002

■ Bacteria Data – Fecal coliform

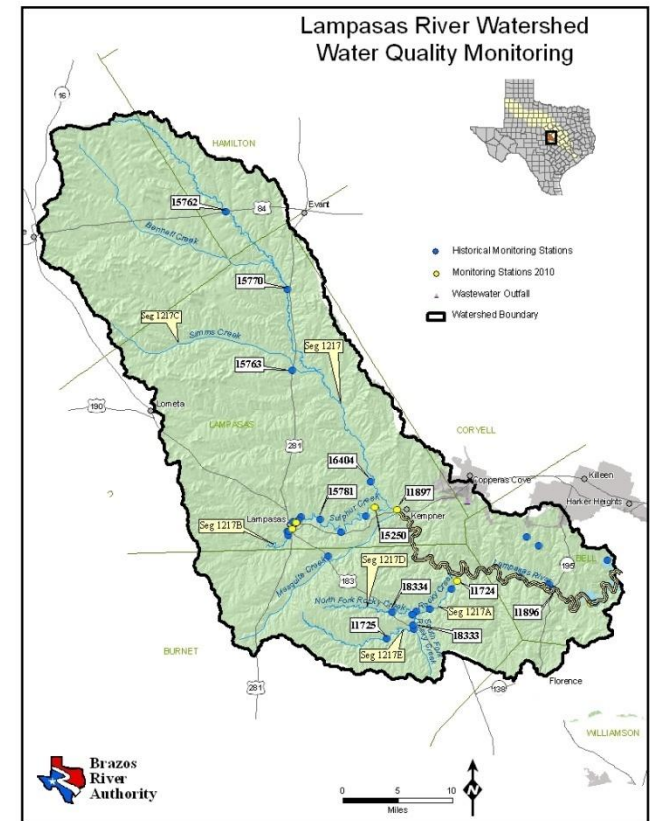
■ N = 99

■ Geomean = **58 CFU**

■ Dissolved Oxygen Grab Data

■ N = 107

■ Average = **9.1 mg/l**





Brazos River Authority

Contact Information:

Jenna Barrett

Water Quality Programs Manager

254-761-3149

jbarrett@brazos.org