

Next Steps for the Lampasas River Watershed Planning Process?



Lisa Prcin

Outreach Coordinator

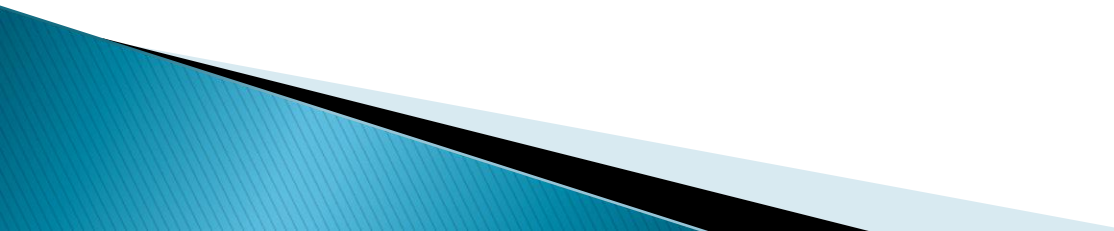
Texas AgriLife Research

Blackland Research & Extension Center

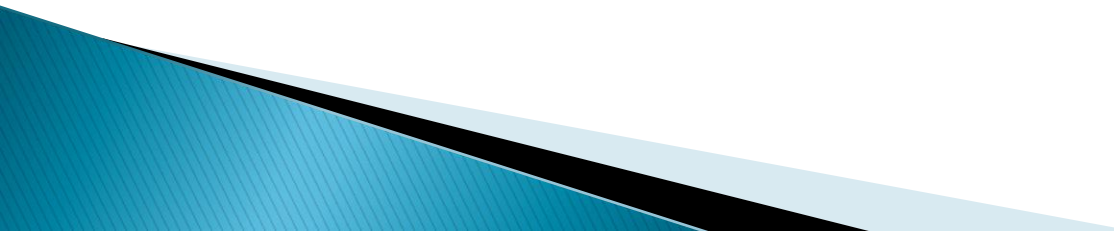
Project Timeline

- ▶ Kick-off of Lampasas WPP ~ May 2009
- ▶ Development of Plan ~ June 2009 – January 2011
 - Quarterly Steering Committee and/or Workgroup meetings
- ▶ Draft of WPP to stakeholders for comments & approval ~ February 2011
- ▶ Stakeholder approved WPP to EPA for federal consistency review~ May 2011
- ▶ Print and publish WPP~ August 2011
- ▶ Start of WPP Implementation ~ September 2011

Immediate Plans...

- ▶ Identify possible steering committee members via stakeholder surveys
 - ▶ Identify relevant workgroups and members
 - ▶ Please let us know if & how you would like to participate!!!
- 

Now is the time to...

- ▶ Be proactive vs. reactive approach to watershed health
 - ▶ Make local decisions on the management of YOUR water resources
 - ▶ Maintain an Environmental, Economical, and Socially sustainable watershed
- 

Links to other WPPs

- ▶ Completed WPPs, Implementation Phase
 - Plum Creek Watershed Partnership
 - pcwp.tamu.edu/
 - Arroyo Colorado Watershed
 - www.arroyocolorado.org
- ▶ WPPs in Development
 - Lake Granger Watershed
 - <http://www.tsswcb.state.tx.us/watersheds#lakegranger>
 - Leon River Watershed
 - www.brazos.org/LeonRiverWPP.asp
 - Lake Granbury Watershed
 - www.brazos.org/gbWPP.asp
- ▶ For a complete list of WPPs across the state, visit www.tsswcb.state.tx.us/wpp

Updates...

www.Lampasasriver.org



LAMPASAS RIVER WATERSHED *Protection Plan*

[Contact Us](#)

[Project Overview](#)

[Calendar](#)

[Water Quality](#)

[Publications](#)

[Watershed Protection Plan](#)

[Links](#)

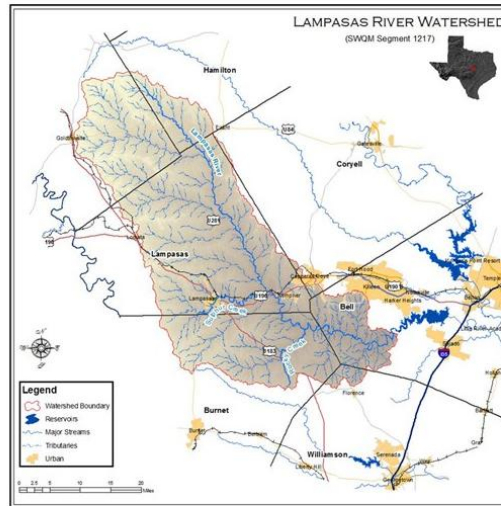
[Partners](#)

[Guestbook](#)

[News](#)

[Meetings](#)

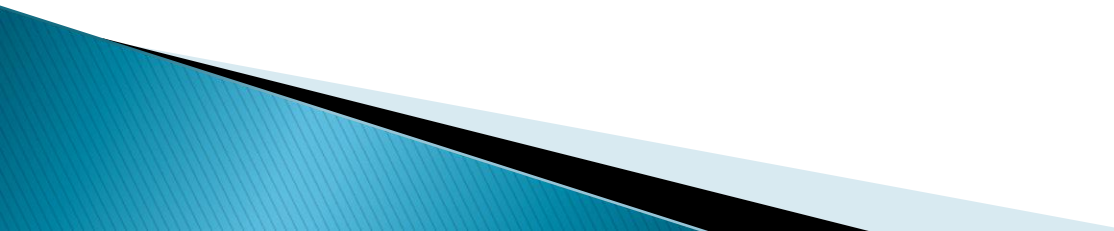
The Lampasas River (segment 1217 in the Brazos River Basin), rises in western Hamilton County 16 miles west of Hamilton and flows southeast for 75 miles, passing through Lampasas, Burnet, and Bell counties. In Bell County the river turns northeast and is dammed five miles southwest of Belton to form Stillhouse Hollow Lake (segment 1216). Below Stillhouse Hollow Lake, the Lampasas River flows to its confluence with Salado Creek and the Leon River to form the Little River.



The Lampasas River is characterized by relatively low water levels most of the time and is situated within a predominantly rural and agricultural landscape. Land use within the watershed is mostly rural, with grasslands and row crops. Major agricultural interests include beef cattle on rangeland, in addition to hay, wheat, oats, sorghum, corn, cotton, peanut, and pecan operations.

Texas requires that water quality in the Lampasas River be suitable for contact recreation and a healthy aquatic ecosystem. This "swimmable and fishable" goal is not fully supported. The Lampasas River above Stillhouse Hollow Lake is listed as impaired on the Texas Water Quality Assessment 2002 List.

How to get involved?

- ▶ Fill out the stakeholder survey!
 - ▶ Serve on steering committee or workgroups
 - ▶ Participate in partnership meetings
 - ▶ Tell your neighbors about the Lampasas Watershed Protection Plan
 - ▶ Let us know if we've missed anyone
 - ▶ Are there issues that you know need to be addressed?
- 

Lampasas Watershed Protection Plan Project Survey and Sign up Sheet

What best describes your stakeholder position in the Lampasas River watershed?
(Circle all that apply)

- 1) business person
- 2) homemaker
- 3) public official
- 4) agricultural producer

- 5) educator
- 6) land owner
- 7) recreationist
- 8) other _____

What best describes the amount of land that you own or manage in the Lampasas River watershed? (Circle all that apply)

- a) < 1 acre
- b) 2 – 4 acres
- c) 5 – 10 acres
- d) 11 – 50 acres

- e) 51– 100 acres
- f) 101 - 500 acres
- g) > 501 acres

Lampasas Watershed Protection Plan Project Survey and Sign up Sheet

Prior to this meeting, were you aware of water quality concerns in the Lampasas River watershed?

- a) Yes
- b) No

Would be willing to serve as a member of the Lampasas River Watershed Partnership?

- a) Yes
- b) No

If your answer was yes, in what capacity are you willing to serve? (Circle all that apply)

- a) Steering Committee member (decision making body that requires attendance at scheduled meetings*)
- b) Workgroup member (topical workgroup focused on a specific subject that requires attendance at scheduled meetings*)
- c) General participant (attendance at some/most meetings)
- d) No, I cannot or do not wish to participate on a regular basis.

* Meeting frequency will be determined by Steering Committee and Workgroup members.



Lampasas Watershed Protection Plan Project Survey and Sign up Sheet

Please mark all days and times which would be **best** for you to participate in meetings:

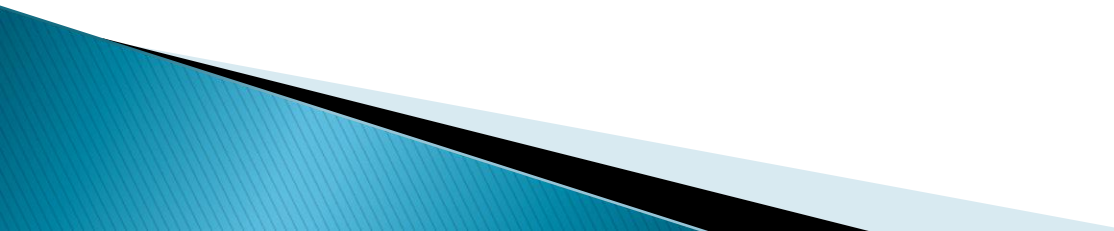
	Monday	Tuesday	Wednesday	Thursday	Friday
Morning					
Afternoon					
Evening					
Anytime					

Lampasas Watershed Protection Plan Project Survey and Sign up Sheet

If you would like to participate, or if you would like to receive more information about the project as it moves forward, please provide your contact information

Name: _____ Phone: _____
Address: _____ Email: _____
City, State, Zip: _____
Affiliation: _____

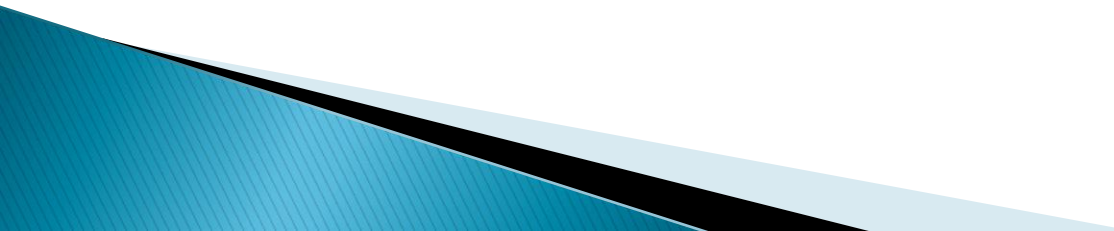
What is your preferred contact method?

- a) Mail
 - b) Phone
 - c) Email
- 

Lampasas Watershed Protection Plan Project Survey and Sign up Sheet

Are there any topics or issues in the Lampasas River watershed that you would like us to include in future discussions?

How did you find out about this meeting? (Circle all that apply)

- a) Mail
 - b) Newspaper
 - c) Email
 - d) Website
 - e) Newsletter
 - f) From a friend
- 

Contact Information

Lisa Prcin
Outreach Coordinator
lprcin@brc.tamus.edu
(254) 774-6030

Steve Potter
Watershed Coordinator
spotter@brc.tamus.edu
(254) 774-6038

Texas AgriLife Research
Blackland Research & Extension Center
Texas AgriLife Research
720 E. Blackland Rd
Temple, TX 76502

Pamela Casebolt
Nonpoint Source Project Manager
pcasebolt@tsswcb.state.tx.us
(254) 773-2250 ext. 247

Texas State Soil & Water
Conservation Board
PO Box 658
Temple, TX 76503

Thank You!!!

